

PART OF S.W. 1/4 OF SECTION 21, T.7N., R.1W., S.L.B. & M.
LAKEVIEW HEIGHTS SUBDIVISION PH 01 P.R.U.D.

AMENDED PLAT

LOTS 34-37, 52 & 53 67-74

IN NORTH OGDEN CITY

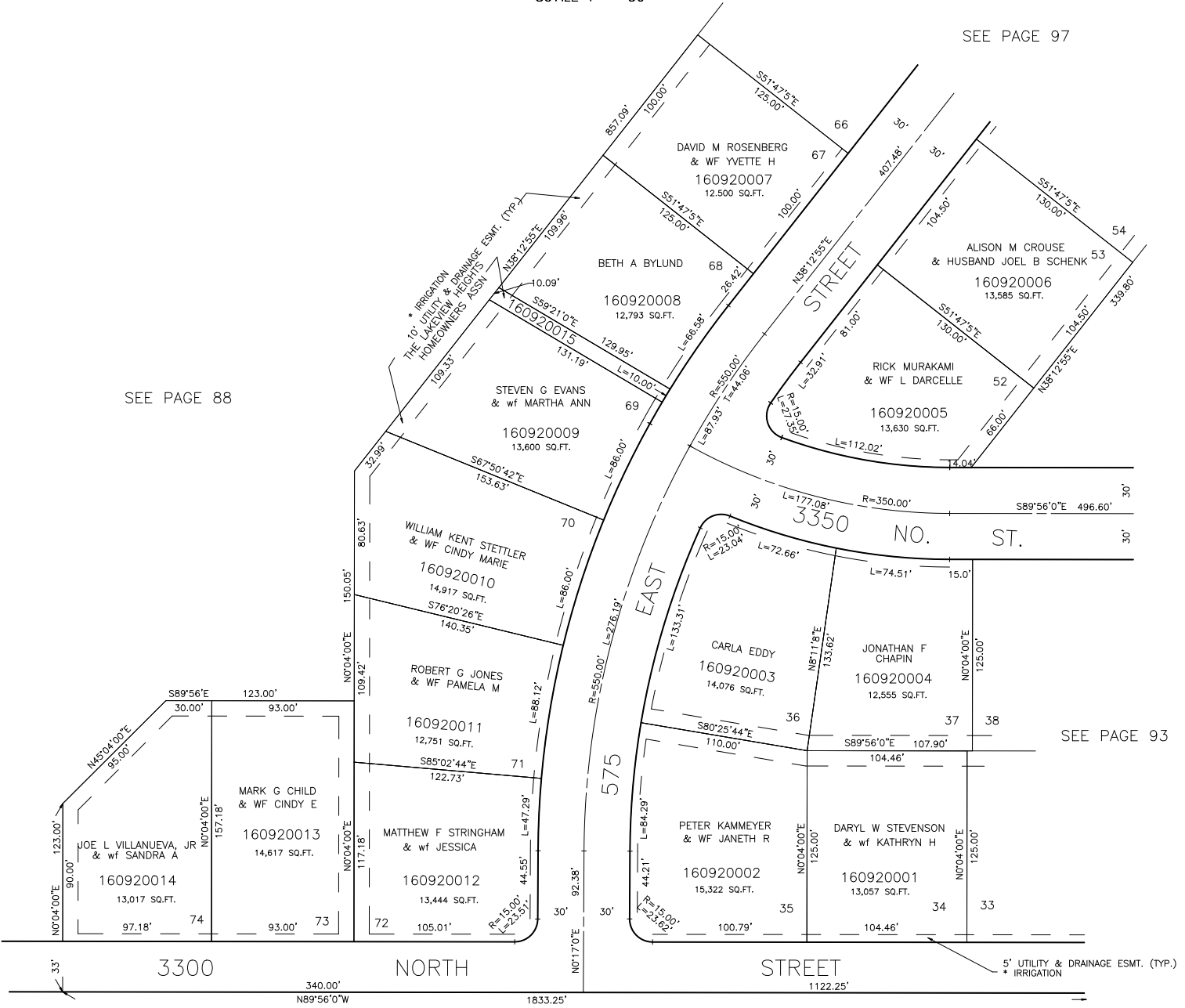
SCALE 1" = 50'

TAXING UNIT: 10

SEE PAGE 97

SEE PAGE 88

SEE PAGE 93



SEE BOOK 17, PAGE 1

FOR COMPLETE ENG DATA SEE ORIGINAL DEDICATION PLAT IN BOOK 23, PAGES 75 TO 84 OF RECORDS.

* SEE CERTIFICATION (1296-429)

G.W.G. 12-77